

TANCO AUTOWRAP SYSTEMS

300 Model (1993)

OPERATORS HANDBOOK

AND

PARTS LIST

WD62-M0793

BRAKE TIMING INSTRUCTIONS

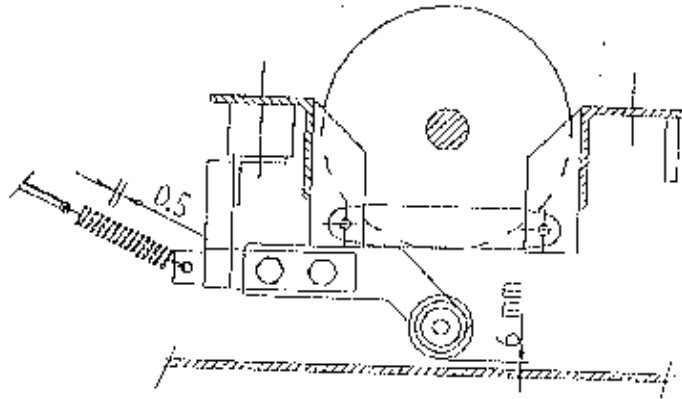
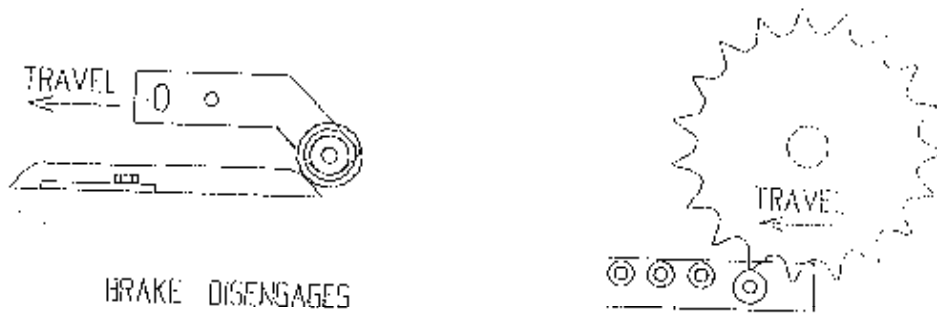


FIG 2



BRAKE DISENGAGES

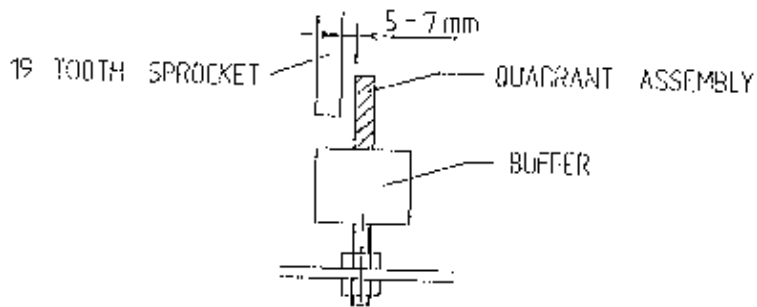
FIG 3



19 TOOTH SPROCKET

3/4" DIA CAM FOLLOWER

FIG 4

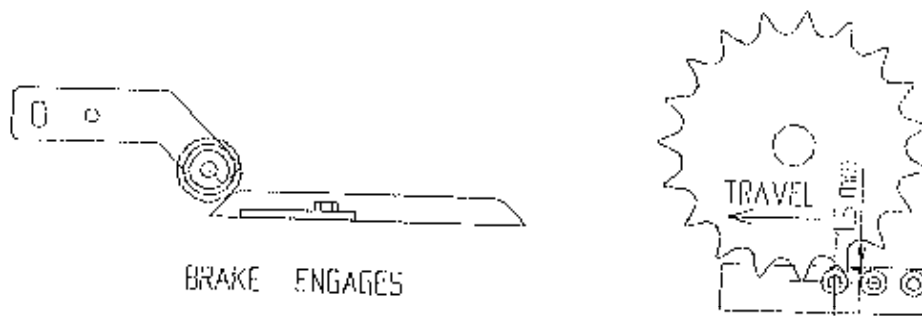


19 TOOTH SPROCKET

QUADRANT ASSEMBLY

BUFFER

FIG 5



BRAKE ENGAGES

FIG 6

TANCO AUTOWRAP

300 MODEL (TRAILED) HYD. CIRCUIT (DIN) (199)

NOTE

(A) When connected to a John Deere tractor, remove existing plugs marked 'P' from both ports on return plate and replace with closed centre plugs to convert valve to closed centre.

The main pressure relief valve must then be adjusted to a pressure setting higher than tractor main pressure relief valve.

TIPPING FRAME
LIFT RAM

LIFT ARM RAM

ENSURE THAT RELIEF VALVE ACTS
ON RETURN LINE FROM HYD. MOTOR

MAIN PRESSURE
RELIEF VALVE.

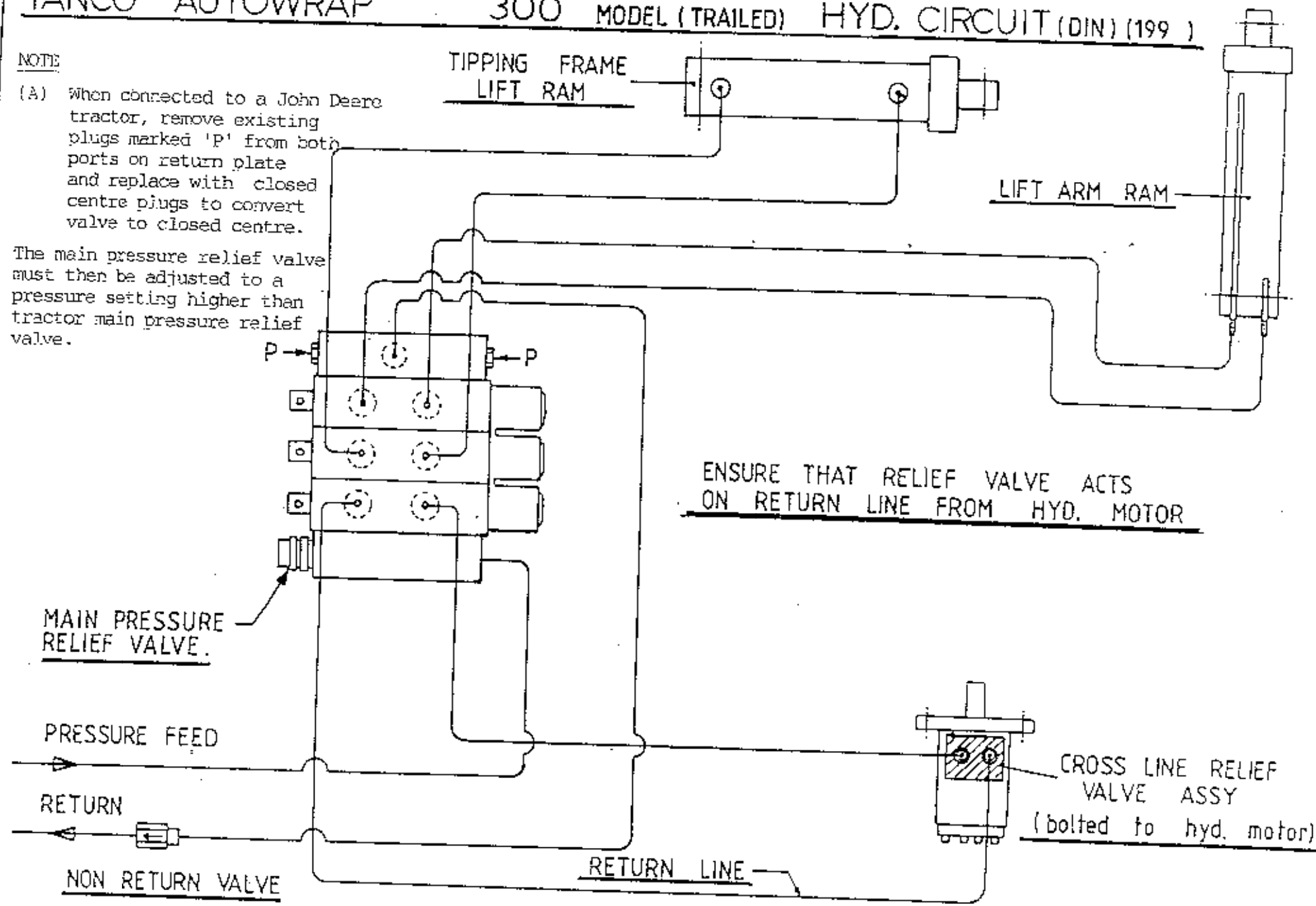
PRESSURE FEED

RETURN

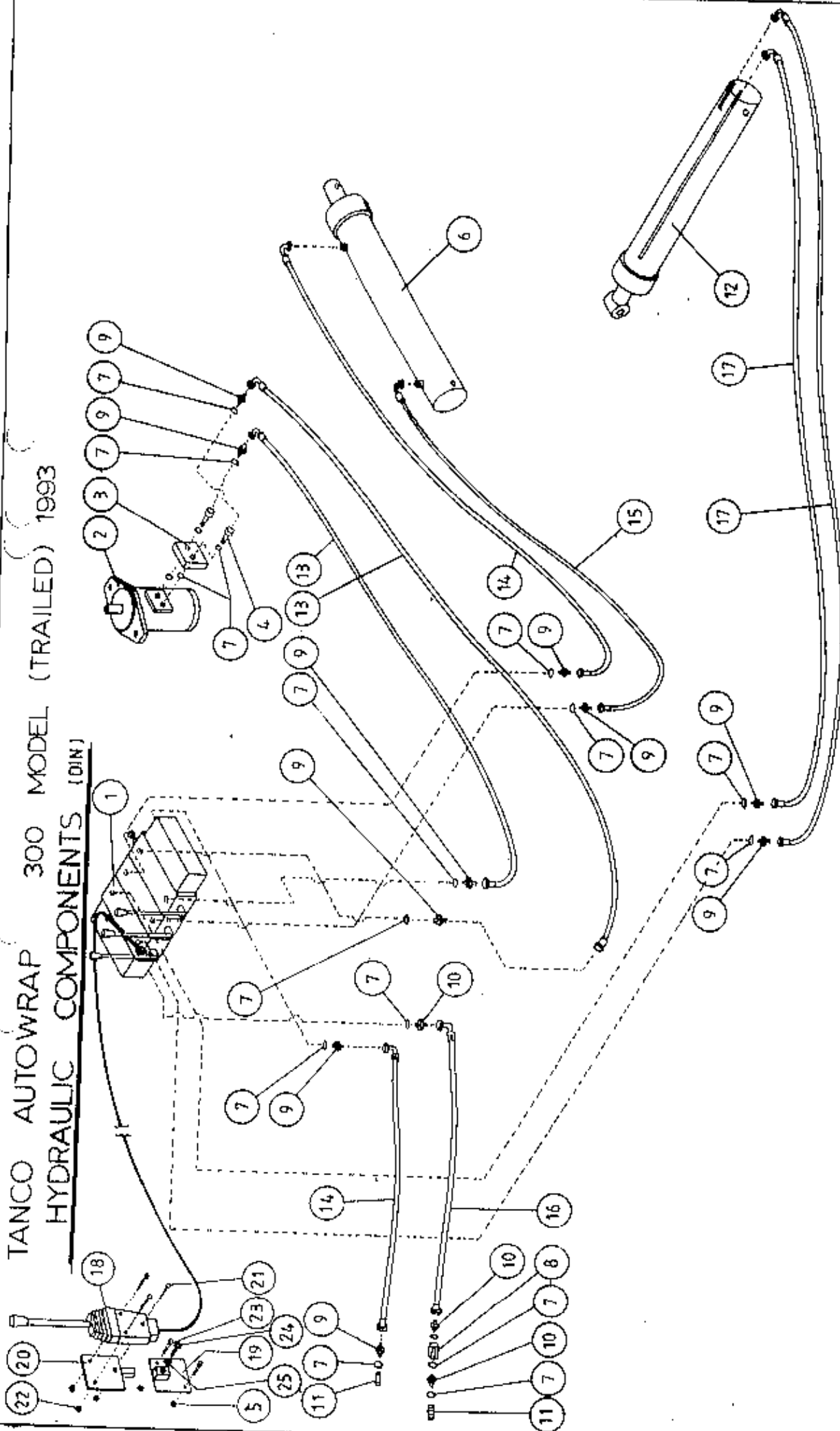
NON RETURN VALVE

RETURN LINE

CROSS LINE RELIEF
VALVE ASSY
(bolted to hyd. motor)



TANCO AUTOWRAP 300 MODEL (TRAILED) 1993
 HYDRAULIC COMPONENTS (DIN)



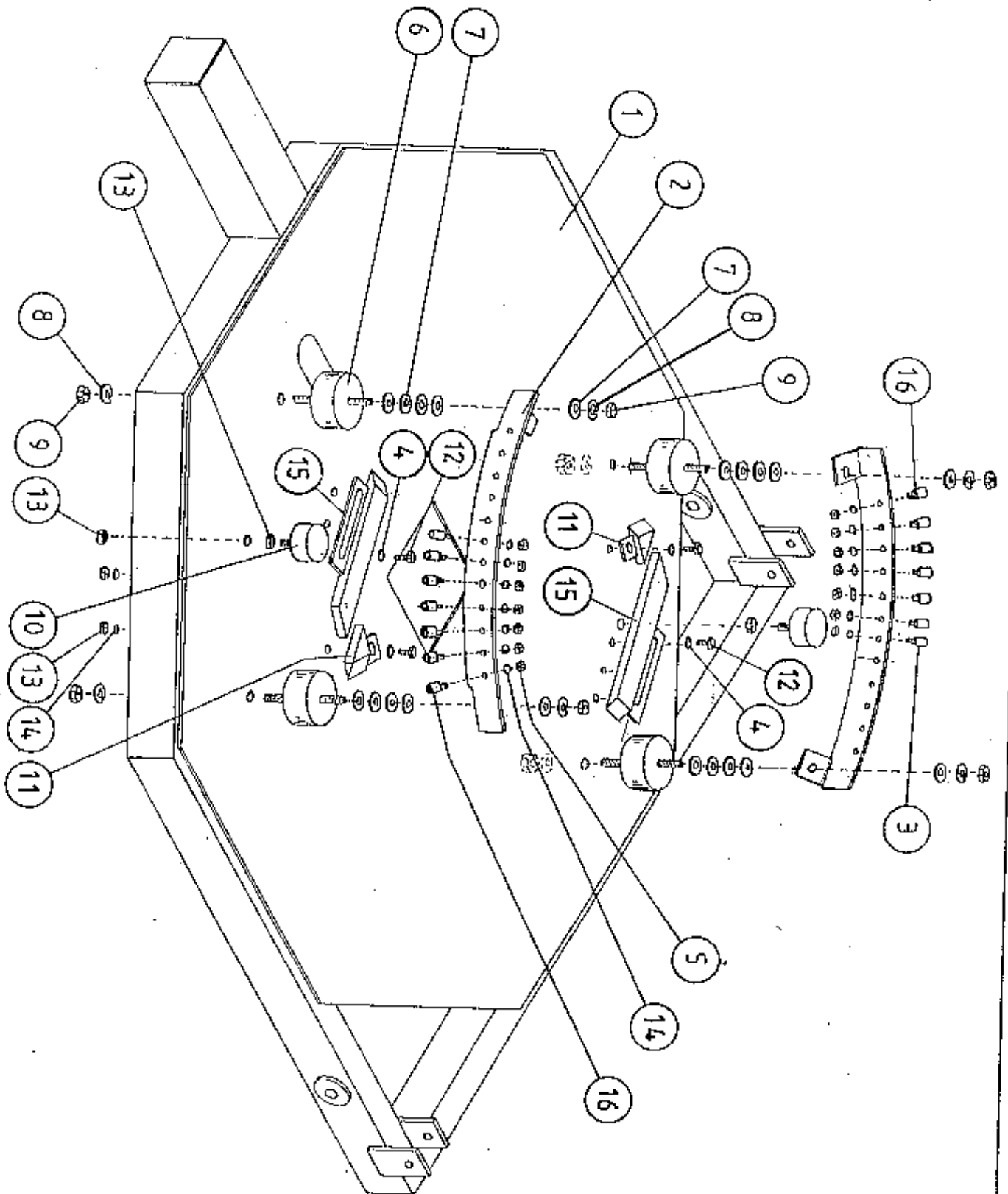
TANCO AUTOWRAP 300 MODEL (TRAILED) 1993

HYDRAULIC COMPONENTS (DIN)

PARTS LIST

<u>ITEM NO.</u>	<u>DESCRIPTION</u>	<u>QTY.</u>	<u>PART NO.</u>	<u>CODE NO.</u>
1.	3 BANK SPOOL VALVE (DIN) C/W LEVERS	1		Z01-03-0180
2.	HYDRAULIC MOTOR (C.I.)	1		Z01-02-AR75
3.	CROSS LINE RELIEF VALVE	1		Z01-03-002
4.	1/2" BSP BOTTOM BANJO BOLT (SPECIAL)	2		
5.	M10 LOCKNUT	2		Z23-10
6.	HYD. RAM (FOR TIPPING FRAME)	1		Z01-01-AR687
7.	1/2" DOWTY WASHER	18		Z01-04-03
8.	1/2" NON RETURN VALVE	1		Z01-03-017
9.	1/2" x 3/8" ADAPTOR	10		Z01-06-06-08
10.	1/2" x 1/2" ADAPTOR	3		Z01-06-08-08
11.	1/2" MALE END Q/R COUPLING	2		Z01-15-081
12.	HYD. RAM (FOR LIFT ARM)	1		Z01-01-AW
13.	96" ST/90 3/8" D/W HOSE	2		Z38-R2-96-S9
14.	84" ST/90 3/8" D/W HOSE	2		Z38-R2-84-S9
15.	72" ST/90 3/8" D/W HOSE	1		Z38-R2-72-S9
16.	84" ST/90 1/2" S/W HOSE	1		Z12-R1-84-S9
17.	120" ST/90 3/8" D/W HOSE	2		Z38-R2-120S9
18.	3 1/2" METER CABLE C/W ACTUATOR & BULKHEAD END	1		Z004-03-0061 Z004-03-009
19.	ACTUATOR MTG. BRACKET BOTTOM HALF	1	B/R 143 A	
20.	ACTUATOR MTG. BRACKET TOP HALF	1	B/R 144 A	
21.	M8 HEX HD. BOLTS x 65mm LONG	3		Z26-0488
22.	M8 LOCKNUTS	3		Z23-08
23.	M10 HEX HD. SETS x 40mm LONG	2		Z26-0645
24.	M12 HEX HD. SET X 30mm LONG	1		
25.	M12 HEX NUT	1		

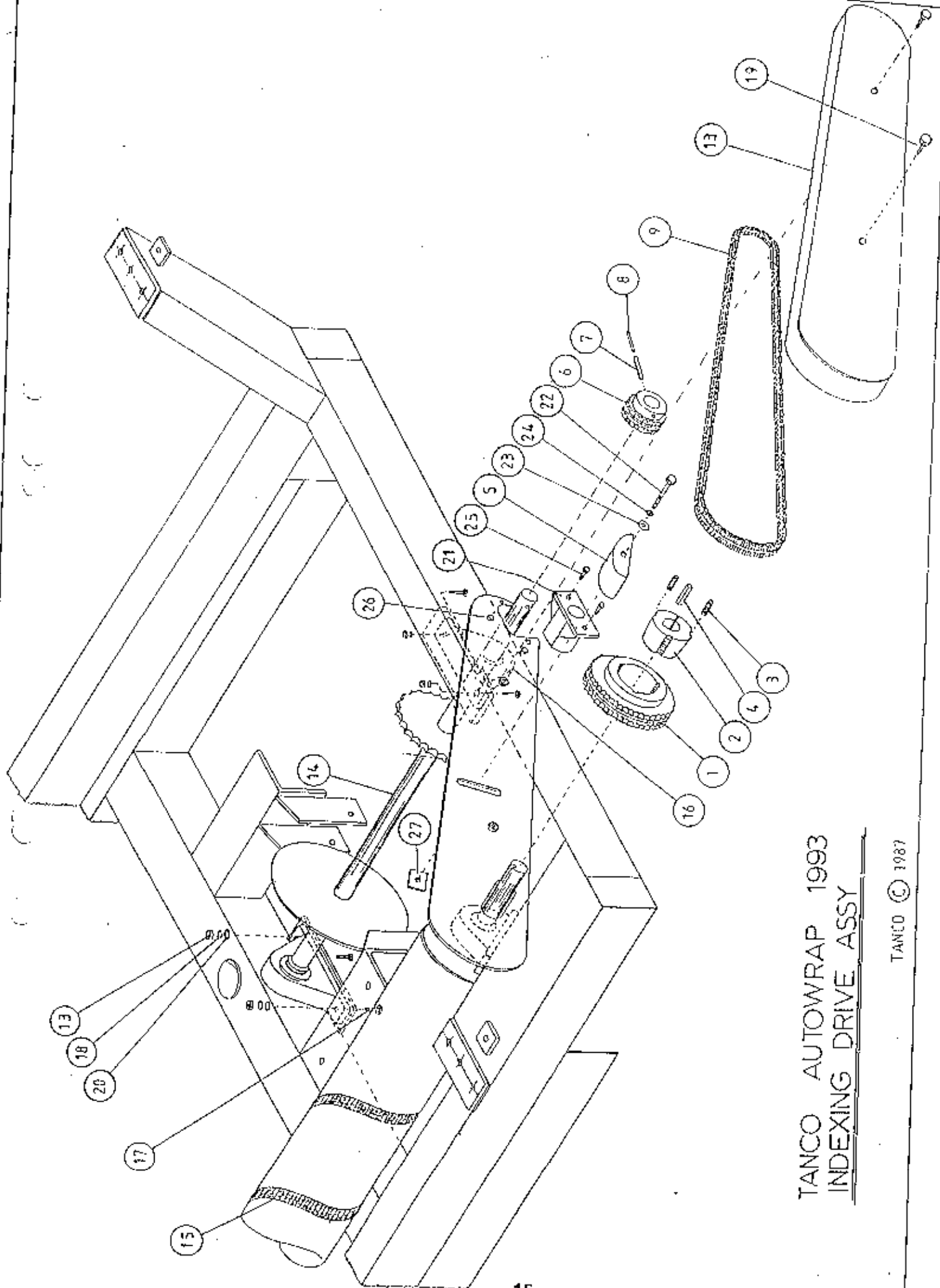
TANCO AUTOWRAP 1993 INDEXING QUADRANT ASSY (50% OVERLAP WITH 500mm WIDE FILM ROLL)



PARTS LIST

INDEXING QUADRANT ASSEMBLY (50% OVERLAP WITH 500MM WIDE FILM ROLL)

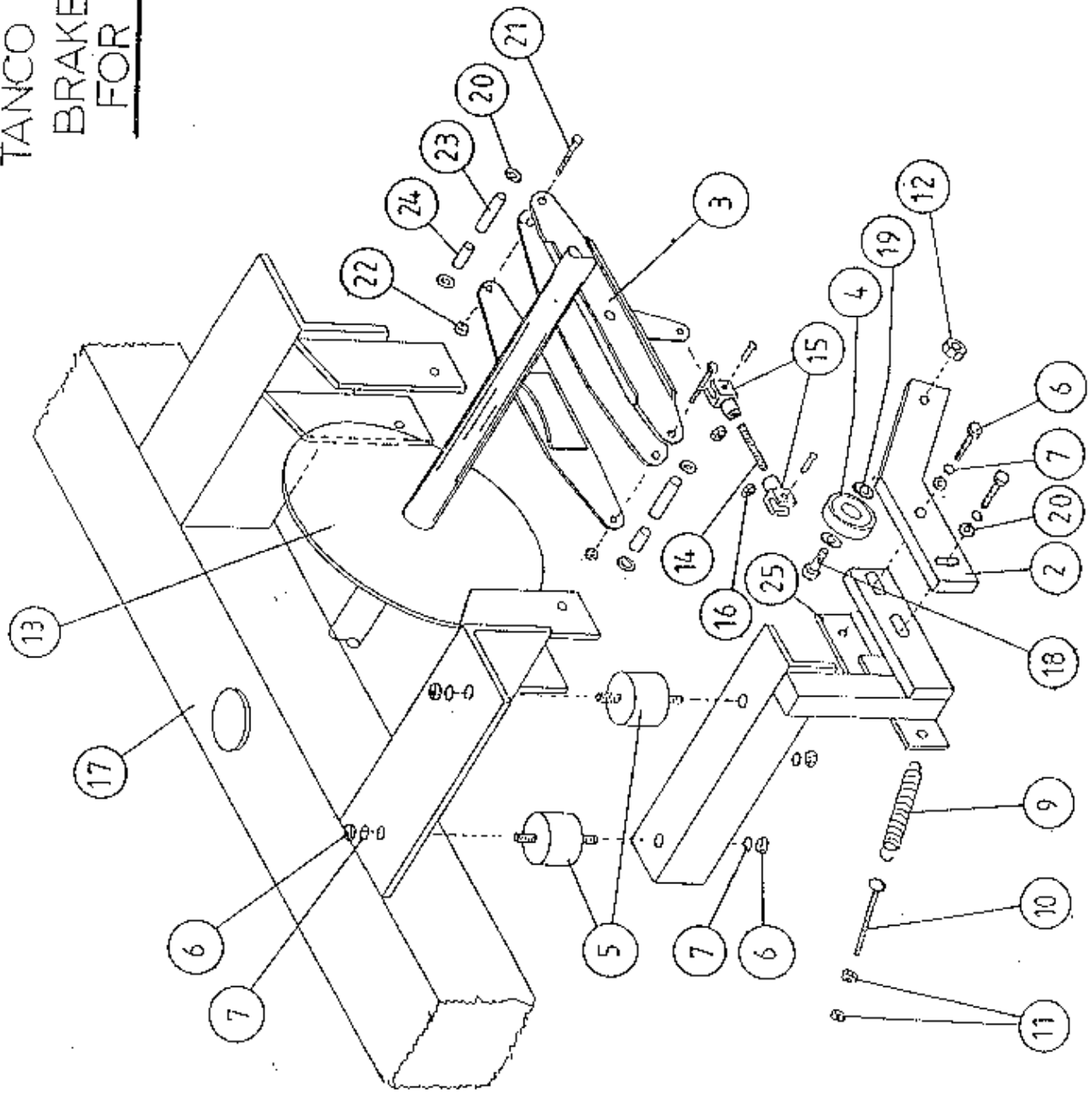
<u>ITEM NO.</u>	<u>DESCRIPTION</u>	<u>QTY.</u>	<u>PART NO.</u>
1.	TIPPING FRAME ASSY.	1	WD60-TF
2.	QUADRANT ASSY.	2	WD623-QA
3.	3/4" DIA CAM FOLLOWER (HEAVY DUTY) C/W GREASE NIPPLE	14	206-425
4.	10mm DIA FLAT WASHERS	3	Z11-02-10
5.	3/8" UNF LOCKNUTS (BINX)	16	Z20-12
6.	RUBBER BUFFER 100mm DIA x 40mm LONG	2	Z40-22
7.	16mm DIA FLAT WASHERS	10	Z10-02-16
8.	16mm DIA SPRING WASHERS	4	Z12-02-16
9.	M16 HEX NUT	4	Z10-16
10.	RUBBER BUFFER 50mm DIA x 25mm LONG	1	Z40-23
11.	CAM ASSY (SHORT)	1	WD623-CAS
12.	M10 HEX HD SPT x 30mm LONG	3	Z26-0625
13.	M10 HEX NUT	5	Z10-10
14.	10mm DIA SPRING WASHER	10	Z12-02-10
15.	CAM ASSY. (LONG)	1	WD623-CAL
16.	1" DIA CAM FOLLOWER C/W GREASE NIPPLE	2	206-426



TANCO AUTOWRAP 1993
INDEXING DRIVE ASSY

TANCO © 1987

TANCO AUTOWRAP 1993
 BRAKE ARRANGEMENT
 FOR INDEXING SHAFT



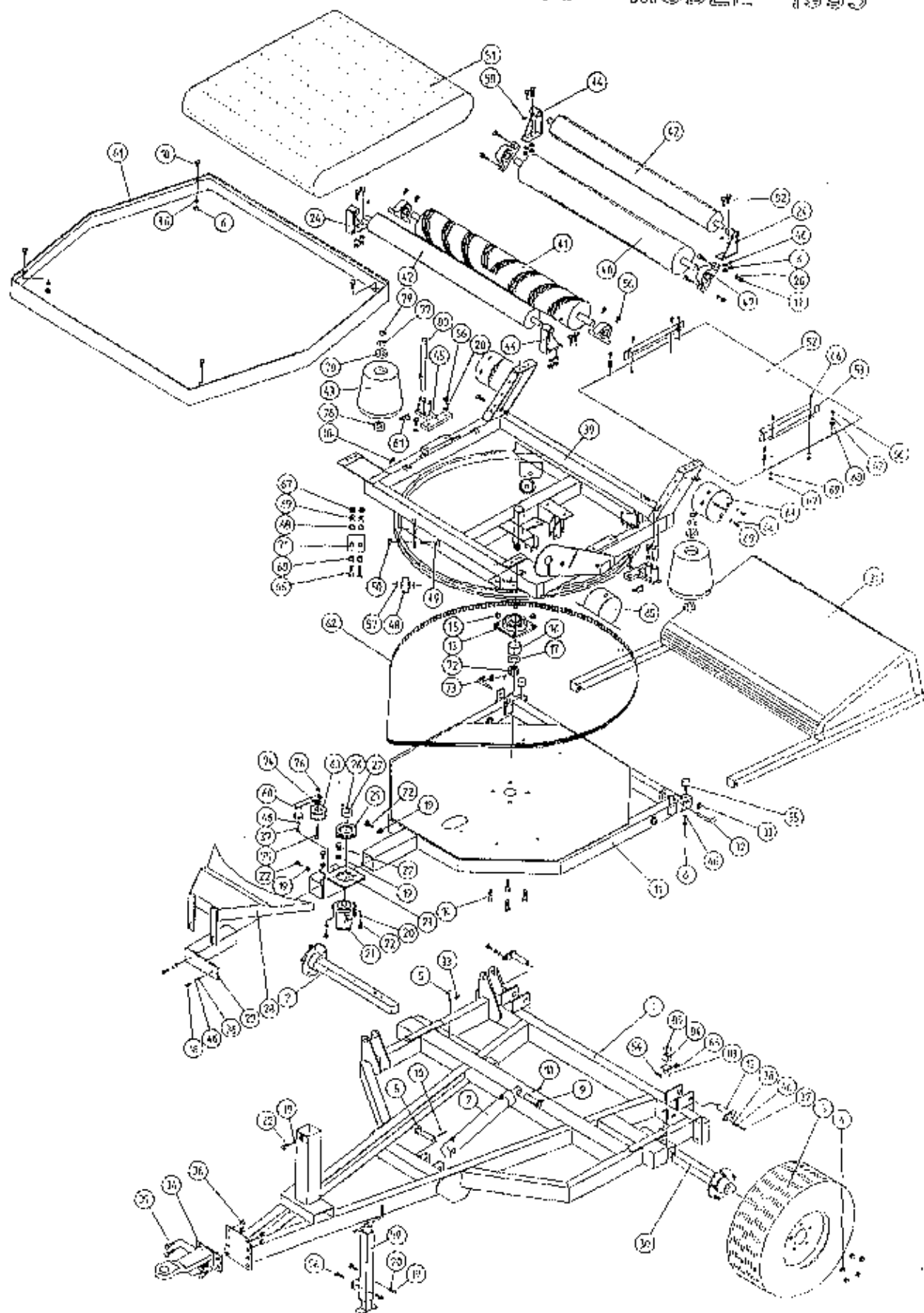
TANCO AUTOWRAP 1993

BRAKE ARRANGEMENT FOR INDEXING SHAFT

PARTS LIST

<u>ITEM NO.</u>	<u>DESCRIPTION</u>	<u>QTY.</u>	<u>PART NO.</u>
1.	CAM FOLLOWER MOUNTING BRACKET (UPPER)	1	WD60-CFMD
2.	CAM FOLLOWER MOUNTING BRACKET (LOWER)	1	WD60-804
3.	CALIPER DISC BRAKE UNIT	1	Z49-92
4.	BALL BEARING (6301)	1	Z06-43
5.	RUBBER BUFFER 50mm DIA x 30 LONG TYPE A 57 SHORE	2	Z40-21
6.	M10 HEX NUTS	4	Z18-10
7.	10mm DIA SPRING WASHERS	6	Z12-02-10
8.	M10 HEX HD SET x 40 LONG	2	Z26-064S
9.	TENSION SPRING	1	Z07-05
10.	EYE BOLT (M8)	1	WD60-EB
11.	M8 HEX NUTS	2	Z18-08
12.	M12 LOCKNUT	1	Z23-12
13.	SPROCKET/SHAFT ASSY	1	WD65-SPR
14.	5/16" UNF THREADED BAR x 90mm LONG	1	WD60-806
15.	5/16" UNF CLEVIS C/W PIN & CLIP	2	Z49-33
16.	5/16" UNF HEX NUT	2	Z15-05
17.	TURN TABLE	1	WD60-TA
18.	M12 HEX HD. SETS x 40mm LONG	1	Z26-0845
19.	12mm DIA FLAT WASHER	2	Z11-02-12
20.	10mm DIA FLAT WASHER	7	Z11-02-10
21.	3/8" UNF HEX HD. BOLT x 3" LONG	2	Z31B-102
22.	3/8" UNF LOCK NUT	2	Z15-06
23.	SPACER 1/2" O.D. x 13/32" I.D. x 1 1/2" LONG	2	Z49-92-01
24.	SPACER 1/2" O.D. x 13/32" I.D. x 1/2" LONG	2	Z49-92-02
25.	Clamping Plate		WD60-836

TANCO AUTOWRAP 300 MODEL 1993



TANCO AUTOWRAP 300 MODEL (TRAILED) 1993

PARTS LIST

<u>ITEM NO.</u>	<u>DESCRIPTION</u>	<u>QTY.</u>	<u>PART NO.</u>
1.	CHASSIS ASSY	1	WD60-CHA
2.	STUB AXLE (LONG)	1	Z04-033
3.	WHEELS	2	Z04-03
4.	WHEEL NUTS	10	Z04-0331
5.	BISSEL PIN	2	Z03-22-AW82
6.	M10 HEX NUT	18	Z18-10
7.	HYD. RAM	1	Z01-01-AR687
8.	RAM BOTTOM PIVOT PIN	1	Z03-02-330
9.	RAM TOP PIVOT PIN	1	Z03-03-50
10.	2" X 1/4" SPLIT PIN	2	Z03-21-29
11.	TIPPING FRAME ASSY.	1	WD60-TF
12.	TIPPING FRAME PIVOT PIN C/W GREASE NIPPLE	2	Z03-01-905 Z39-60
13.	2" DIA FLANGE BEARING	1	Z06-49
14.	5/8" UNF HEX HD.SET x 2" LONG	4	Z30R-064
15.	5/8" UNF LOCKNUTS	4	Z20-10
16.	SPACER	1	WD63-1043
17.	RETAINING COLLAR	1	WD60-770
18.	M10 HEX HD SET x 30mm LONG	10	Z26-062S
19.	M12 HEX NUT	16	Z18-12
20.	12mm DIA SPRING WASHER	14	Z12-02-12
21.	HYD.MOTOR C.L.	1	Z01-02-AR75
22.	M12 HEX HD SETS x 30mm LONG	7	Z26-082S
23.	HYD. MOTOR MOUNTING ASSY.	1	WD60-HMR
24.	ROLLER MOUNTING BRACKET	2	WD60-TRMBC.
25.	4"DIA x 1/2" PITCH TOOTHED PULLEY	1	Z09-005-AW1
26.	TAPER LOCK BUSH TO SUIT 1" DIA SHAFT	1	Z09-005-AW2
27.	M10 STUDS x 15mm	2	Z28-01
28.	HYD. MOTOR GUARD ASSY	1	WD60-HMG
29.	HYDRAULIC MOTOR GUARD MOUNTING BRACKET	1	WD60-HAMB
30.	STUB AXLE (SHORT)	1	Z04-032
31.	RALE RAMP ASSY	1	WD60-DR
32.	BISSEL PIN	2	Z03-22-AW100
33.	4mm "R" CLIP	3	Z36-02

2 2

2 2

TANCO AUTOWRAP 300 MODEL (TRAILER) 1993

PARTS LIST

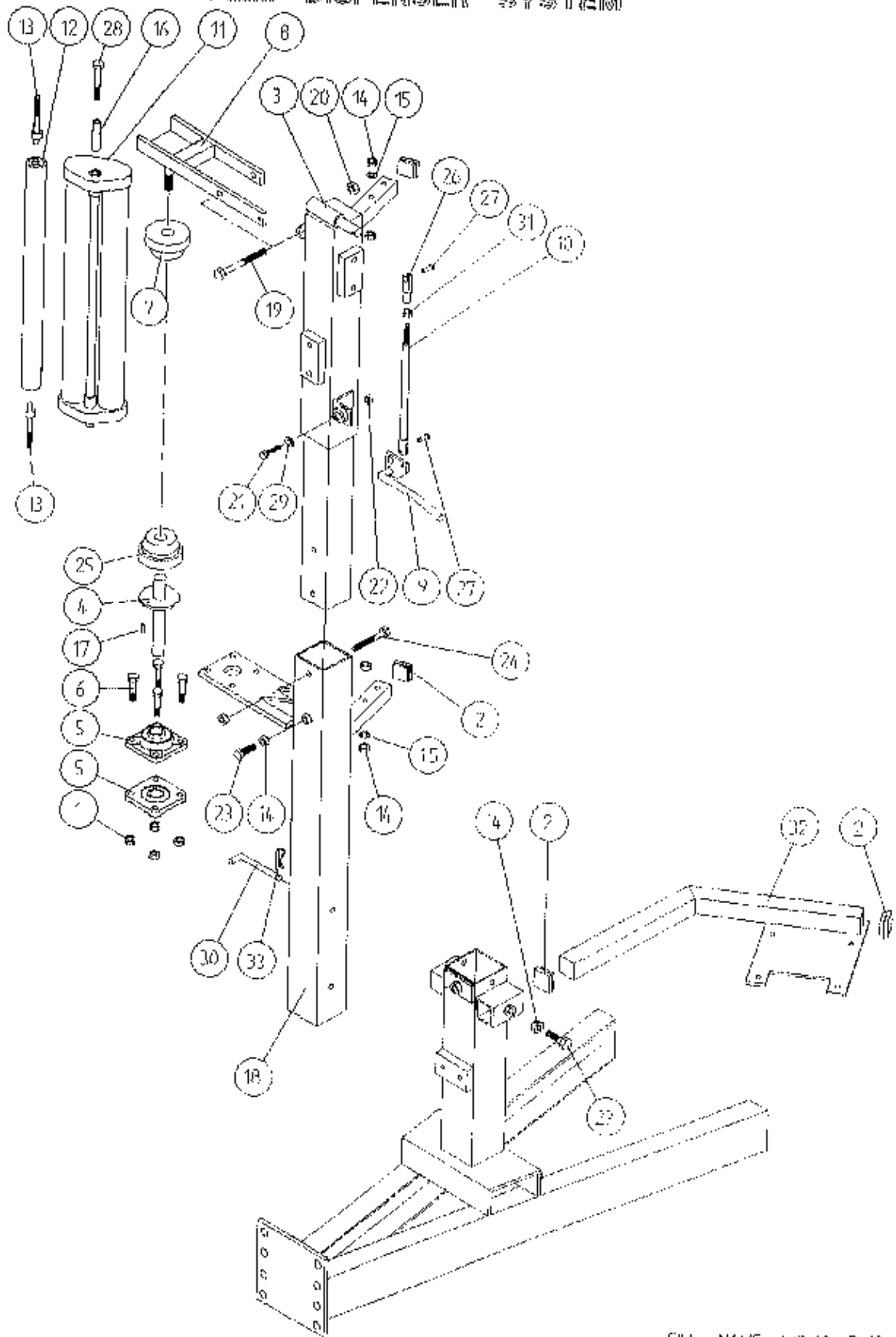
<u>ITEM NO.</u>	<u>DESCRIPTION</u>	<u>QTY.</u>	<u>PART NO.</u>
34.	HITCH ASSY.	1	WD60-HIT
35.	M16 HEX HD. SET x 45mm LONG	4	Z26-1238
36.	M16 LOCKNUTS	4	223-16
37.	M10 HEX HD. SET x 25mm LONG (TRIFLOCK)	3	3265-061
38.	10mm DIA MACHINED PLAT WASHER	4	211-02-10
39.	TURN TABLE ASSY.	1	WD60-TA
40.	BIG ROLLER ASSY. IDLER	1	WD60-091
41.	BIG ROLLER ASSY. DRIVER	1	WD60-090
42.	SMALL ROLLER ASSY.	2	WD60-092
43.	SIDE ROLLER	2	Z06-468
44.	ROLLER MTG. BRACKET	2	WD60-093BR
45.	END ROLLER MOUNTING BRACKET	2	WD60-093E
46.	10mm DIA SPRING WASHERS	23	Z12-02-10
47.	1 1/4" PILLOW BLOCK BEARING C/W CAM LOCK COLLAR	4	Z06-485
48.	SUPPORT WHEELS (4" DIA)	4	Z06-466
49.	AXLE ASSY. C/W GREASE NIPPLE	4	Z03-22-A6/AX Z39-60
50.	M20 LOCKNUTS	4	Z23-20
51.	1 METER WIDE x 89 1/2" LONG x 1/4" FLAT BELT	1	Z05-02-ABW
52.	TURN TABLE COVER PLATE	1	WD60-093
53.	BELT GUIDE ASSY.	2	WD635-101
54.	M8 LOCKNUTS	2	Z23-06
55.	BOPPER 50mm DIA x 50mm LONG	3	Z40-20
56.	M12 HEX HD. SETS x 40mm LONG	14	Z265-084
57.	SPACER	8	WD60-198
58.	1/8" B.S.P. ST GREASE NIPPLE	4	Z39-60
59.	SCREW JACK ASSEMBLY	1	WD60-1A
60.	ROSTA TENSIONING UNIT ARM	1	Z06-454
61.	MAIN GUARD ASSY.	1	WD60-MG
62.	170" LONG x 1/2 PITCH x 1" WIDE TOOTHED BELT	1	Z05-02-AR2
63.	STEPPED ROLLER C/W BEARINGS	1	Z06-456

TANCO AUTOWRAP 300 MODEL (TRAIJED) 1993

PARTS LIST

ITEM NO	DESCRIPTION	QTY.	PART NO.
64	GRASS GUARD (CLOSED TYPE)	3	249-98
65	GRASS GUARD (OPEN TYPE)	1	249-981
66	M8 HEX HD SETS X 20MM LONG	20	226-039S
67	M8 HEX NUTS	14	218-08
68	8MM DIA FLAT WASHERS (MUD FLAT)	20	211-02-081
69	8MM DIA SPRING WASHERS	20	212-02-08
71	SCRAPER	2	WD60-70S
72	1 1/4" LINDX HEX NUT	1	218-300
73	M8 GRUB SCREW	2	228-006
74	SPACER	1	218-12
75	M10 HEX HD BOLT X 60MM LONG	1	226-067D
76	M10 LOCKNUT	1	223-10
77	THRUST WASHER	2	WD60-292
78	BEARING (25MM I.D.)	4	206-433
79	CIRCLIP	2	228-525
80	ROLLER SHAFT ASSEMBLY	2	WD60-RSA
81	10MM "D" LINDX PINS	2	238-03
82	M10 HEX HD SET X 35MM LONG	8	226-063S
83	COUNTER MOUNTING BRACKET	1	WD60-CMB
84	COUNTER (RESETABLE TYPE)	1	249-911
85	3MM POP RIVIETS	4	203-25-03

TANCO AUTOWRAP 300 MODEL 1003
 FILM DISPENSER SYSTEM



FIL. NAME WJ 50 - PL. 10

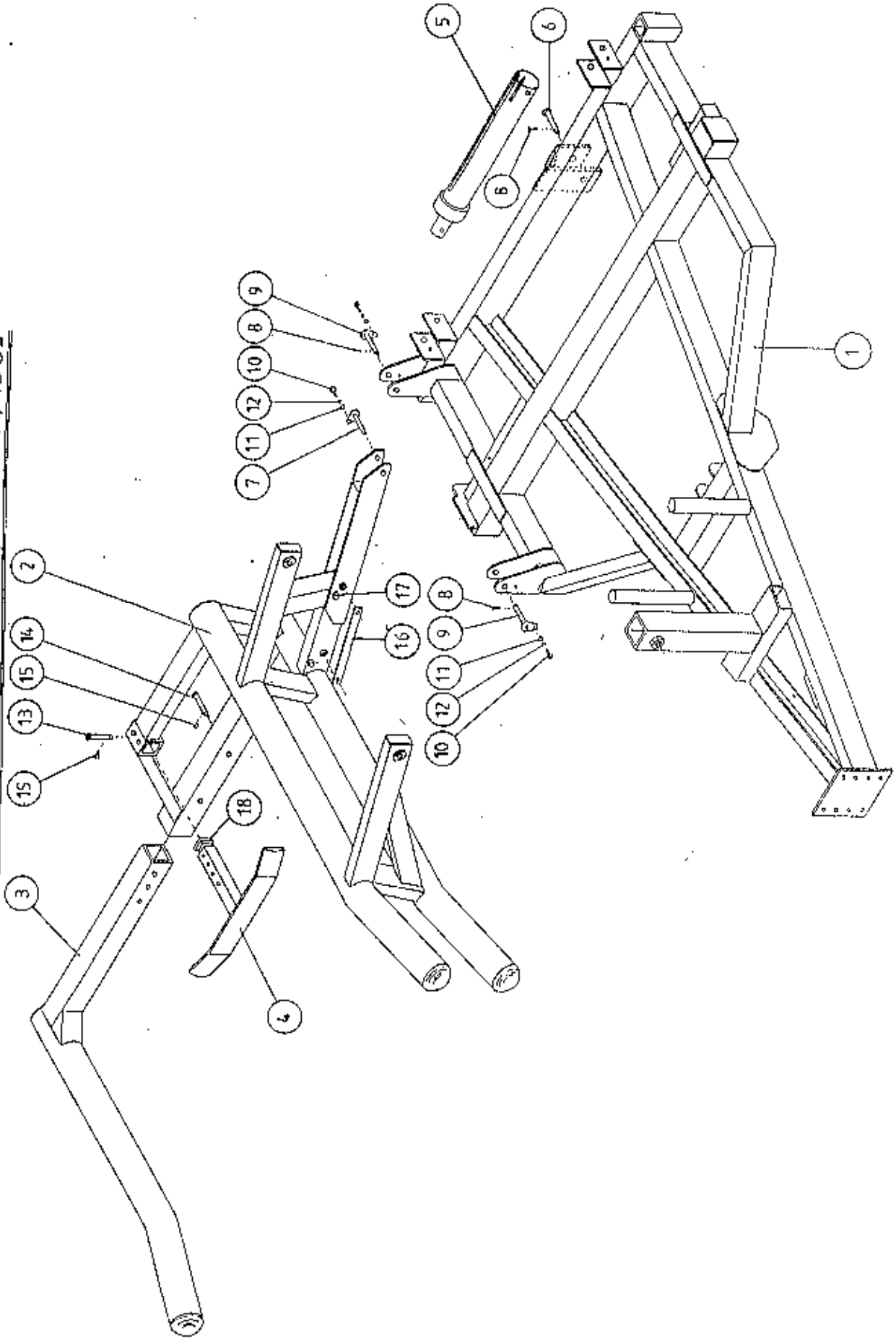
TANCO AUTOWRAP 300 MODEL 1993
FILM DISPENSING SYSTEM

WD60PL10

PARTS LIST

<u>ITEM NO.</u>	<u>DESCRIPTION</u>	<u>QTY.</u>	<u>PART NO.</u>
1.	M10 LOCKNUTS	4	Z23-10
2.	PLASTIC CAPS (TO SUIT 40 x 40 x 3 RHS)	4	Z32-07
3.	DISPENSER MOUNTING (UPPER)	1	WD60-DMUM
4.	FILM SPOOL ASSEMBLY	1	WD60-SPO
5.	1" DIA FLANGE BEARING	2	Z06-48
6.	M10 HEX HD. BOLT x 50mm LONG	4	Z26-066B
7.	CONE (TOP) C/W BALL BEARINGS	1	Z06-45-01
8.	CLAMP ASSEMBLY	1	WD60-DMCA
9.	LEVER ASSEMBLY	1	WD60-DMLA
10.	LINK ASSEMBLY	1	WD60-DMLK
11.	FILM DISPENSER UNIT MK 6	1	D613
12.	SLAVE ROLLER ASSY (PLASTIC COATED)	1	WD60-STLR
13.	SLAVE ROLLER PIVOT	2	WD60-253
14.	M12 HEX NUTS	6	Z18-12
15.	12mm DIA SPRING WASHER	2	Z12-02-12
16.	SPOOL VALVE MOUNTING PLATE ASSEMBLY	1	WD60-SUMP
17.	1/4" DIA TENSION PIN x 3/4" LONG	1	Z03-20-062
18.	DISPENSER MOUNTING (LOWER)	1	WD60-DMLM
19.	M12 HEX HD BOLT x 130mm LONG	1	Z26-094B
20.	M12 LOCKNUT	3	Z23-12
21.	M8 HEX HD BOLT x 35mm LONG	1	Z26-042B
22.	M8 LOCKNUT	1	Z23-08
23.	M12 HEX HD SET x 30mm LONG	2	Z26-082B
24.	M12 HEX HD BOLT x 100mm LONG	1	Z26-092B
25.	CONE (BOTTOM)	1	Z06-45-02
26.	CLEVIS (M10)	1	Z49-336
27.	PIN (5/16" DIA) C/W CLIP	2	Z49-337
28.	FILM GUARD ASSY	1	WD623-FG
29.	BISSEL PIN X 110MM LONG	1	WD623-B74
30.	BISSEL PIN	1	WD60-B74
31.	5/16" UNF HEX NUT	1	Z15-05
32.	SPOOL VALVE MOUNTING PLATE ASSY.	1	WD65-VM3
33.	4mm "R" CLIP	1	Z36-02

TANCO AUTOWRAP LIFT ARM & CHASSIS
300 MODEL (TRAILED) 1993



TANCO AUTOWRAP 300 MODEL (TRAILED) 1993

PARTS LIST

LIFT ARM AND CHASSIS

<u>ITEM NO.</u>	<u>DESCRIPTION</u>	<u>QTY.</u>	<u>PART NO.</u>
1.	CHASSIS ASSEMBLY	1	WD60-CHA
2.	LIFT ARM ASSEMBLY	1	WD60-LA
3.	ADJUSTABLE OUTER ARM ASSY.	1	WD60-LAAA
4.	ADJUSTABLE BALE STOP	1	WD60-LABS
5.	HYDRAULIC RAM (LIFT ARM)	1	Z01-01-AW
6.	RAM BOTTOM PIVOT PIN	1	Z03-02-330
7.	RAM TOP PIVOT PIN	1	Z03-01-797
8.	2" x 1/4" SPLIT PINS	3	Z03-21-29
9.	LIFT ARM PIVOT C/W GREASE NIPPLE	2	Z03-01-905
10.	M10 HEX HD SET X 25mm LONG (TUFLOCK)	3	Z268-061
11.	10mm DIA MACHINED FLAT WASHER	3	Z11-02-10
12.	10mm DIA SPRING WASHER	3	Z12-02-10
13.	SPAREX PIN	1	Z03-04-73
14.	SPAREX PIN	1	Z03-04-77
15.	7/16" DIA LINCH PINS	2	Z03-22-06
16.	SAFETY SUPPORT BAR	1	WD60-319
17.	6mm DIA LINCH PIN	2	Z03-22-03
18.	PLASTIC CAP	1	Z32-10